

Lossless Ethernet L2 Switch Solutions HIW

This is brand new product named 'HIW'. The world's first, lossless ethernet switching HUB solutions developed in collaboration with Comfit.

【Future】

- Detect any network problems.
- Auto-recovery function at once.
- Self-operating addressing function.
- Skip-connecting function.

Test result : Insertion and removal

	Port A	Port B
Link Status	Link Up	Link Up
Speed mode	100M Full	100M Full
Tx Packet	4,151,719	4,151,668
Tx Byte	265,710,016	265,706,752
Tx Packets Rate	0.00	0.00
Tx Line Rate(Mbps)	0.00	0.00
Tx L2 Payload Rate(Mbps)	0.00	0.00
Tx Datagram Rate(Mbps)	0.00	0.00
Tx Utilization(%)	0.00	0.00
Rx Packet	4,151,668	4,151,719
Rx Byte	265,706,752	265,710,016
Rx Packets Rate	0.00	0.00
Rx Line Rate(Mbps)	0.00	0.00
Rx L2 Payload Rate(Mbps)	0.00	0.00
Rx Datagram Rate(Mbps)	0.00	0.00
Rx Utilization(%)	0.00	0.00

transmission packet

receive packet

Freed from network failures

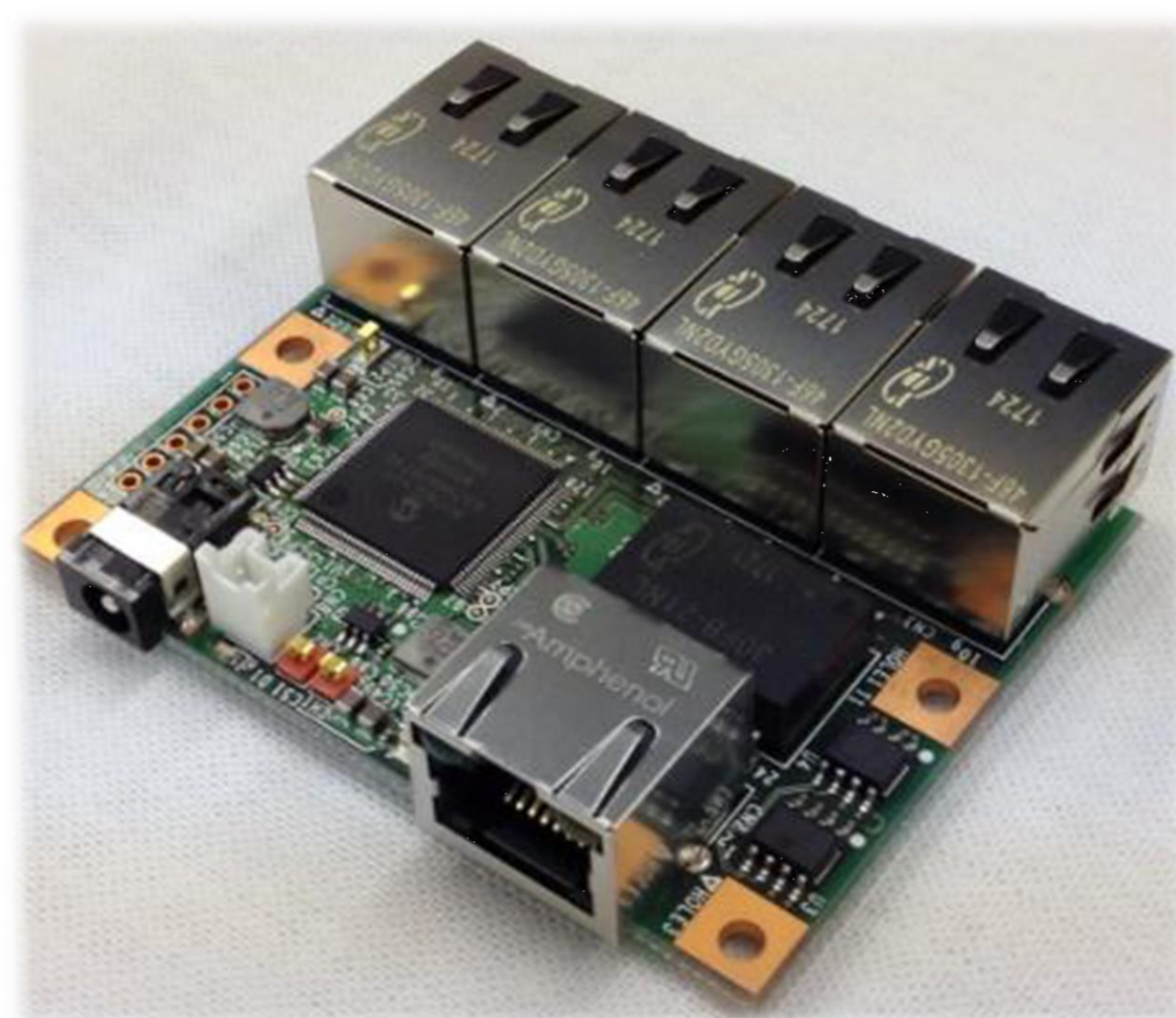


【Patent number】 P6902309

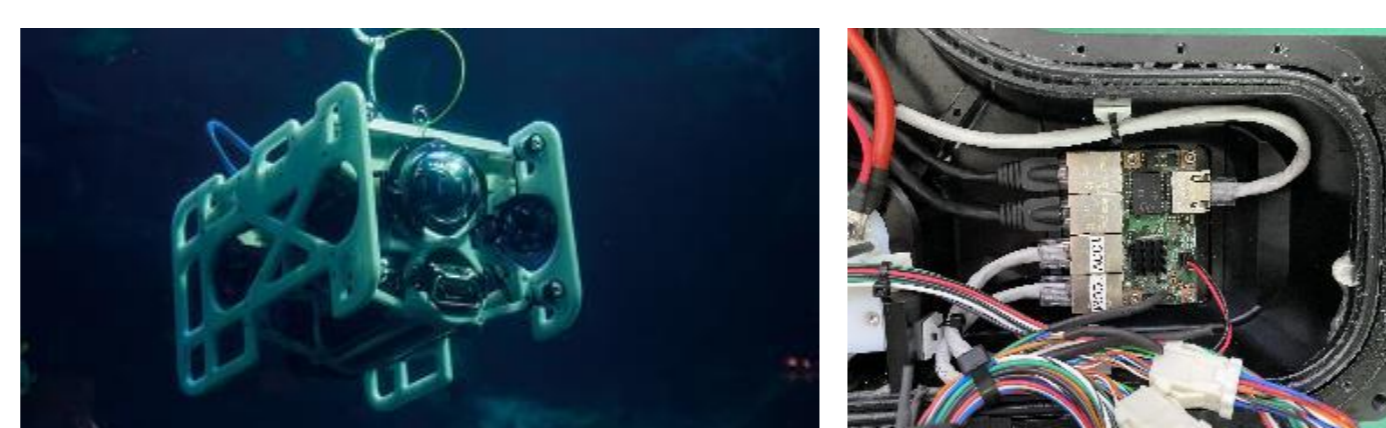
Original Products, L2 Switch Solution

Small Form Factor Embedded Switching Hub

EMB-5PG-L2SWH

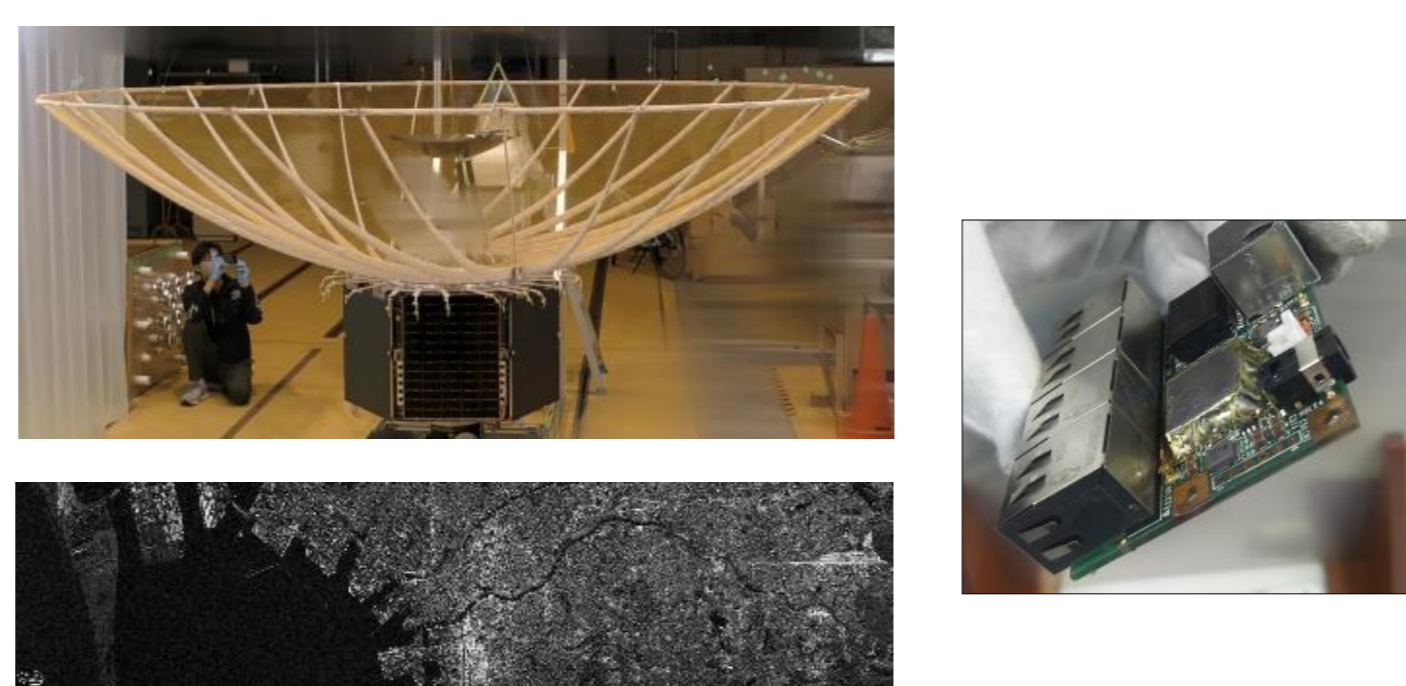


Case-1 Underwater drone



FullDepth Co., Ltd.

Case-2 Small SAR satellite

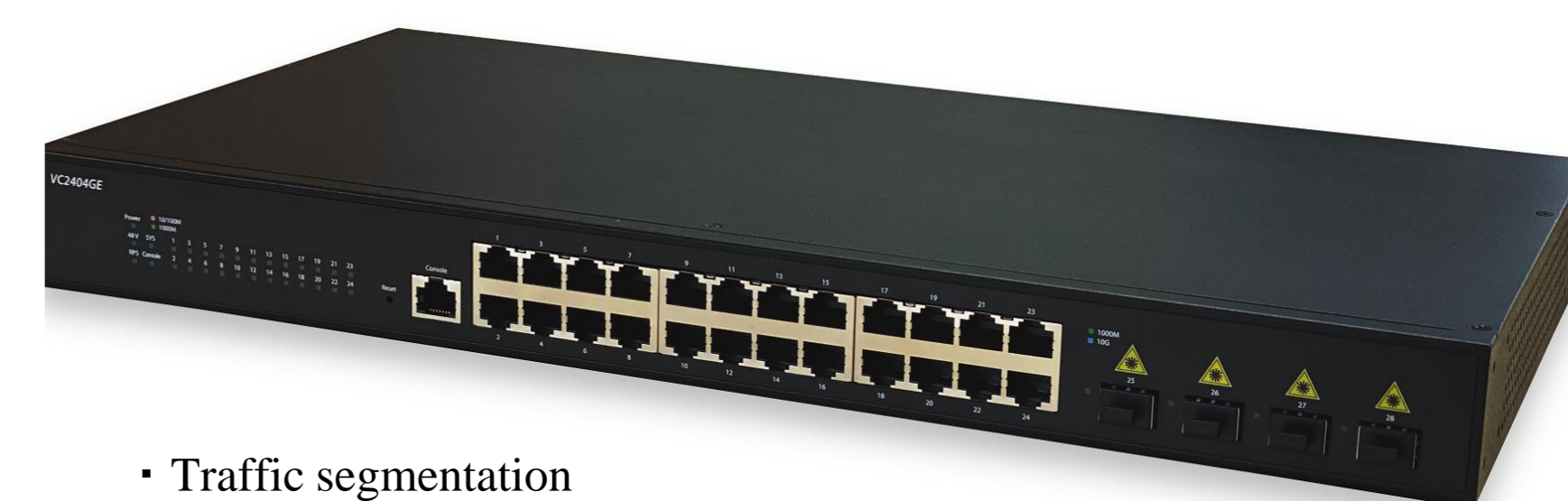


iQPS Inc.

For specific applications

L2 Switch VC2404GE

10BASE-T/100BASE-TX/1000BASE-T 24port / SFP+ 4port



- Traffic segmentation
- MAC address filtering
- VLAN
- ACL
- Snooping (IGMP/MLD)
- Spanning tree (STP/RSTP/MSTP)
- QoS
- Monitoring/Management (CLI, WebGUI, TELNET, SNMP, SSH)

